



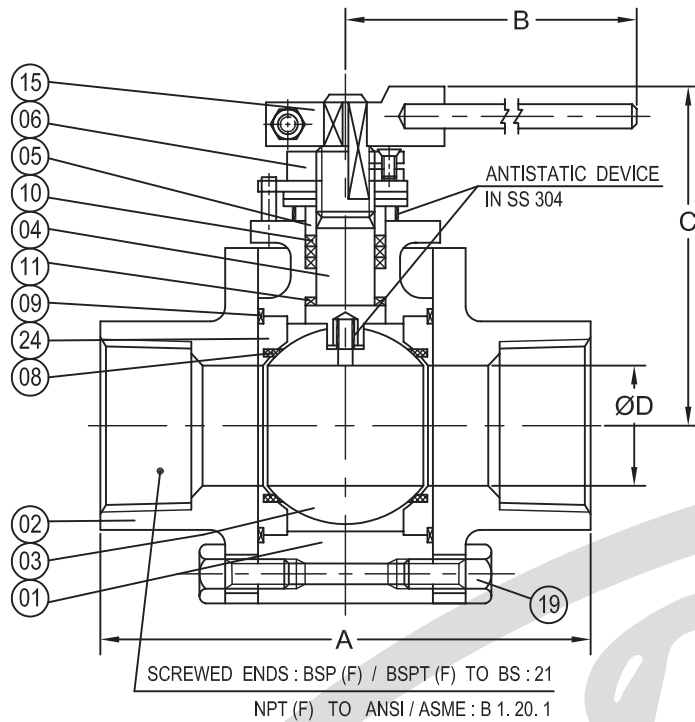
BALL VALVE - SERIES 'W'

DATE : 12 SEPT. 2008

DRG. NO : BV 3103

07
REV. NO.

3 - PIECE, FULL BORE - FIRE SAFE



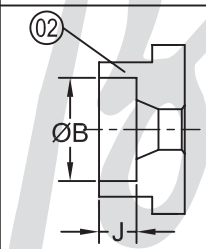
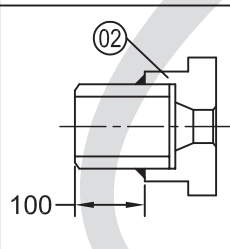
PT. NO.	PART NAME	MATERIAL		
		WCB	CF8	CF8M
01	BODY	WCB	CF8	CF8M
02	END PIECE	WCB	CF8	CF8M
03	BALL	CF8	CF8M	
04	STEM	410	304	316
05	GLAND	410	304	316
06	GLAND NUT	CF8		
08	SEAT	PTFE / CFT / GFT		
09	BODY SEAL	GRAFOIL		
10	STEM SEAL	GRAFOIL		
11	STEM WASHER	25% GFT		
15	LEVER ADAPTER	WCB		
19	HEX. SCREW	304		
24	SEAT RETAINER	CF8	CF8M	

NOTE :

1. ONLY DIMENSION 'A' IS CERTIFIED & CONFORMS TO MANUFACTURER'S STD, OTHER DIMENSIONS & WEIGHTS ARE INDICATIVE.
2. FIRE SAFE TESTED AS PER API : 607 5th EDITION.

BUTT WELD ENDS WITH NIPPLE TO ASME B16.25, SCH-40/80

SOCKET WELD ENDS TO ASME B16.11, SCH-40/80



DESIGN STD. : BS EN ISO 17292 (BS 5351) / TESTING STD. : EN 12266 -1 (BS 6755 -1)
ALL DIMENSIONS ARE IN mm.

CLASS	600
SIZE	50
A	145
B	475
C	135
ØD	50
ØB	61.1
J	18.5
WEIGHT- kgs.	7.5
QTY.	
TAG NO.	

CODE	WCB	CA15	CF8	CF8M	410	304	316
MATERIAL	A216	A217	A351	A351	A276	A276	A276
SPECN.	WCB	CA15	CF8	CF8M	410	304	316

TEST PRESSURES, bar		
CLASS	600	
HYD.	SHELL	150
	SEAT	PTFE - 69 CFT / GFT - 76
AIR	SEAT	6.9

CUSTOMER : _____
ORDER NO. : _____
JOB/PROJECT : _____

MANUFACTURED BY : M/s B.D.K. ENGINEERING INDUSTRIES LIMITED, HUBLI - 580 030 , INDIA

APPROVED :

CHECKED :

DRAWN :

FOR APPROVAL FOR RECORD