

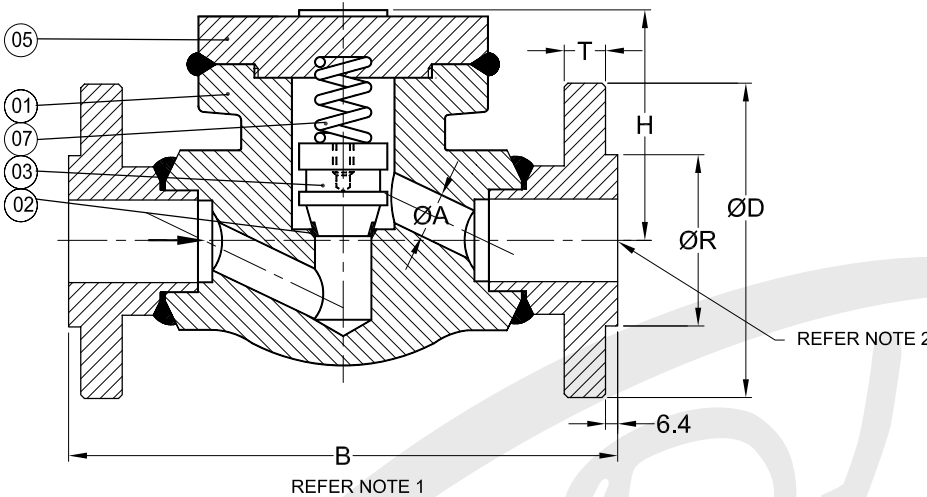
APPR:

CHD:

DRN:

SEAL WELDED COVER DESIGN

PT.NO.	PART NAME	MATERIAL
01	BODY	A 105 / F 304 / F 316 / F 11 / F 22
02	SEAT RING -STELLITED	INTEGRAL
03	DISC -STELLITED	410 / 304 / 316
05	COVER	A 105 / F 304 / F 316 / F 11 / F 22
07	SPRING	SS 316



NOTE :

- 1) DIMN. 'B' CONFORMS TO ASME - B16.10 / BS:2080.
- 2) FLANGED ENDS TO ASME - B16.5.
- 3) TEST PRESSURES FOR IBR, VALVES SHALL BE AS PER REQUIREMENTS.

DESIGN STD.: API 602-2005/ISO 15761-2002
 TESTING STD.: API 598 / BS EN 12266-1:2003.
 ALL DIMENSIONS ARE IN MM.

CLASS		1500					
SIZE	15	20	25	32	40	50	
ØA	8.0	9.0	14	20	25	27	
B ±1.5	216	229	254	279	305	368	
FLANGE DETAILS	ØD ±1.5	121	130	149.5	159	178	216
	PCD ±1.5	82.6	88.9	101.6	111.3	124	165
	HOLE Ø	22.4	22.4	25.4	25.4	28.5	25.4
	NO. OF HOLES	4	4	4	4	4	8
	T ⁺³ / ₀	22.4	25.4	28.5	28.5	31.8	38.0
H ±5 (APPROX.)	54	68	72	102	102	112	
ØR ±0.8	35	43	51	63.5	73	92	
Approx. Wt.-kg.	4.5	7	13	18	19	25	
QTY.							
TAG. No.							

CODE	A 105	F 304	F 316	CA 15	CF 8	CF 8M	410	304	316	F 22
MATL	A 105	A 182	A 182	A 217	A 351	A 351	A 276	A 276	A 276	A 182
SPECN	A 105	F 304	F 316	CA 15	CF 8	CF 8M	410	304	316	F 22

CUSTOMER: _____
 ORDER NO.: _____
 JOB/PROJECT: _____

TEST PRESSURE, bar		
HYD	SHELL	389
	SEAT	285

FOR APPROVAL FOR RECORD