

B.D.K. ENGINEERING INDUSTRIES LIMITED



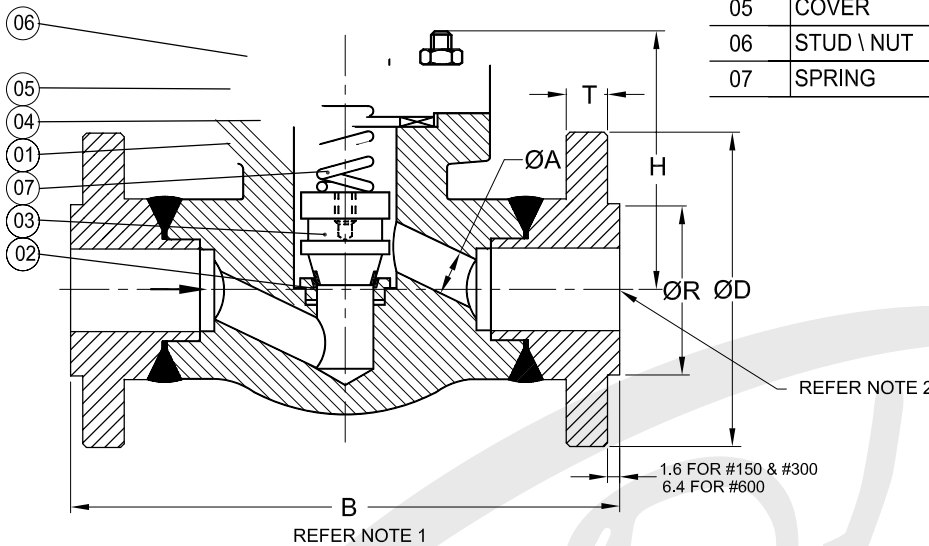
FORGED-LIFT CHECK VALVE, REDUCED BORE(RB)

DATE : 01MAR 2006

DRG. NO : FLCFE-R08-T

00
REV.NO.

PT.NO.	PART NAME	MATERIAL
01	BODY	A 105 / F 304 / F 316
02	SEAT RING	410 / 304 / 316
03	DISC	410 / 304 / 316
04	GASKET	SPIRAL WOUND SS:304 ASB. FILLED
05	COVER	A 105 / F 304 / F 316
06	STUD \ NUT	A193 Gr. B7 / A194 Gr.2H
07	SPRING	SS 316



NOTE :

- 1) DIMN. 'B' CONFORMS TO ANSI - B16.10 / BS:2080.
- 2) FLANGED ENDS TO ANSI - B16.5.
- 3) TEST PRESSURES FOR IBR, VALVES SHALL BE AS PER REQUIREMENTS.

DESIGN STD.: BS 5352.
TESTING STD.: API 598 / BS EN 12266-1:2003.
ALL DIMENSIONS ARE IN MM.

CLASS	150						300						600						
	SIZE	15	20	25	32	40	50	15	20	25	32	40	50	15	20	25	32	40	50
ØA	9.0	12.0	17.5	22.5	29.5	35	9.0	12.0	17.5	22.5	29.5	35	9.0	12.0	17.5	22.5	29.5	35	
B ±1.5	152	178	203	216	229	267	152	178	203	216	229	267	165	190	216	229	241	292	
FLANGE DETAILS	ØD ±1.5	89	99	108	118	127	152.5	95.3	117.4	124	133.5	155.5	165.1	95.3	117.4	124	133.5	155.5	165.1
	PCD ±1.5	60.5	69.8	79.2	88.9	98.5	120.6	66.5	82.5	88.9	98.6	114.3	127	66.5	82.5	88.9	98.6	114.3	127
	HOLE Ø	16	16	16	16	16	19	16	19	19	19	22.4	19	16	19	19	19	22.4	19
	NO. OF HOLES	4	4	4	4	4	4	4	4	4	4	4	8	4	4	4	4	4	8
T +3 0	10	10	10	11.1	12.7	14.2	12.7	14.2	16	17.5	19	20.8	14.3	15.8	17.6	20.6	22.4	25.4	
H ±5 (APPROX.)	54	66	72	102	102	108	54	66	72	102	102	108	54	66	72	102	102	108	
ØR ±0.8	35	43	51	63.5	73	92	35	43	51	63.5	73	92	35	43	51	63.5	73	92	
Approx. Wt.-kg.	2.3	3	4.5	9	9.2	13.5	2.8	4	6	12	12.5	15	3.5	5.2	7.2	13.5	14	19.5	
QTY.																			
TAG. No.																			

CODE	A 105	F 304	F 316	CA 15	CF 8	CF 8M	410	304	316	F 22
MATL SPECN	A 105	A 182 F 304	A 182 F 316	A 217 CA 15	A 351 CF 8	A 351 CF 8M	A 276 410	A 276 304	A 276 316	A 182 F 22

CUSTOMER: _____
ORDER NO.: _____
JOB/PROJECT: _____

		TEST PRESSURE, bar			
		CLASS	150	300	600
HYD	SHELL		30	76	152
	SEAT		22	56	114

MANUFACTURED BY : M/s B.D.K. ENGINEERING INDUSTRIES LIMITED, HUBLI - 580 030, INDIA

APPROVED :

CHECKED :

DRAWN :

FOR APPROVAL FOR RECORD